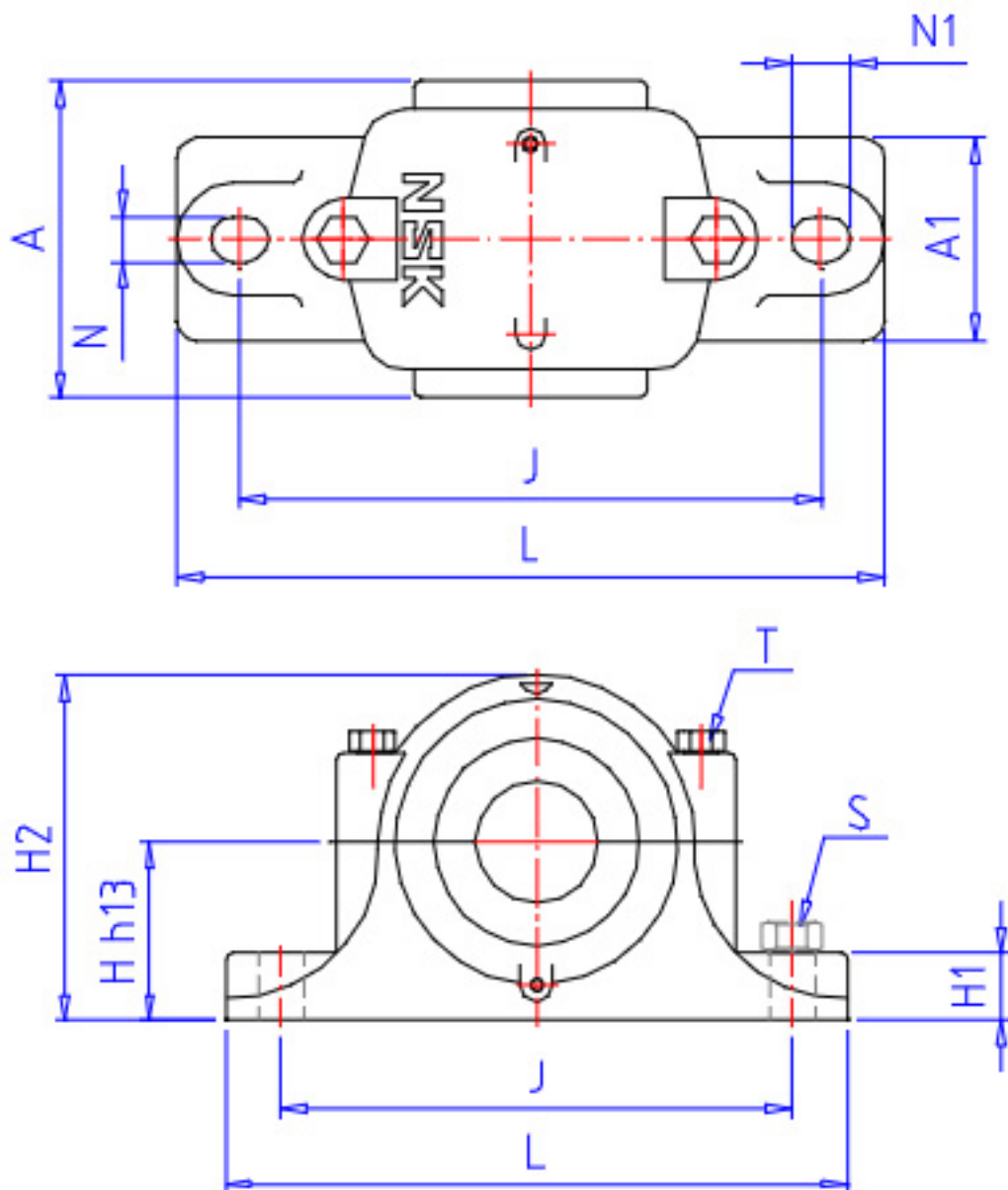


NSK 54416U参数

| | | | | |
|------|--------|--------|--------|------|
| 尺寸 | T8 | 83.5 | mm | - |
| | B | 27 | mm | - |
| | SB | 22.0 | mm | - |
| | A1 | 30.5 | mm | - |
| | R | 125 | mm | - |
| 安装尺寸 | DA | 125 | mm | (最大) |
| | SRA | 2.0 | mm | (最大) |
| | SRB | 1.0 | mm | (最大) |
| 重量 | MASS | 16000 | g | 重量 |
| 型号 | 型号 | 54416U | | - |
| 外形尺寸 | SD2 | 65 | mm | 内径 |
| | SD | 80 | mm | 外径 |
| | D | 170 | mm | 宽度 |
| | T1 | 120 | mm | - |
| | T5 | 128.4 | mm | - |
| | T7 | 140 | mm | - |
| | SR | 2.1 | mm | (最小) |
| | SR1 | 1.0 | mm | (最小) |
| | 基本额定载荷 | CAN | 272000 | N |
| COAN | | 620000 | N | 静载荷 |
| CA | | 27800 | kgf | 动载荷 |
| COA | | 63500 | kgf | 静载荷 |
| 极限转速 | GRE | 850 | 1/min | 脂润滑 |
| | OIL | 1300 | 1/min | 油润滑 |
| 尺寸 | SD3 | 170.0 | mm | - |
| | D1 | 83 | mm | - |
| | D2 | 125 | mm | - |
| | D3 | 175 | mm | - |
| | T2 | 73.5 | mm | - |
| | T6 | 77.7 | mm | - |

NSK 54416U图片



参考资料:<http://www.sozhou.com/p/5026b946.html>

